

BOARD & BATTEN

PREMIUM VERTICAL VINYL SIDING



*Classic beauty.
Contemporary convenience and appeal.*

Alside[®]

Board & Batten Premium Vertical Vinyl Siding



Add classic style and distinction to your home.

Here's an easy way to create a bold, new look for your home . . . start with a little history. Gothic Revival architecture, for example. A favorite detail of this classic style was board and batten siding: wide boards and narrow battens that produced bold vertical lines and a striking sense of symmetry. It was exterior design that perfectly captured the soaring aspirations of 19th century America.

Now it's easy to add that same distinguished beauty to your home with Alside Board & Batten Premium Vinyl Siding. Use its historically inspired details to create eye-catching emphasis for your entire home, or to add elegant distinction at key architectural areas.

Enjoy the beauty. We've taken care of the maintenance.

Classic board and batten homes still attract homeowners who admire the distinctive lines and details that set these homes apart. But homeowners are also quick to appreciate something else – the high cost of regular maintenance needed to keep the original wood siding in repair and freshly painted. Fortunately, that's something you won't have to worry about. Because Alside Board & Batten Premium Vinyl Siding is made to fit right into the easy-care lifestyle today's homeowner wants.



Made stronger for a lifetime of maximum beauty.

Alside combines these ingredients in an extra-thick panel – 20% thicker than other premium vinyl sidings and 25% thicker than standard sidings. The extra thickness provides greater strength and rigidity, helping siding stay straight and even year after year. That means outstanding beauty you can count on for as long as you own your home.

Premium ingredients mean easy care and dependable quality. Proprietary compounds give Alside Board & Batten Siding rugged durability and lasting visual appeal.

Made with only the very best materials.

PureStrength™ vinyl resin adds strength and weather resistance. It prevents moisture infiltration from rain and humidity, so panels won't rot, warp, shrink or swell. The result is low-cost, easy-care maintenance.

Ti-Shield™ titanium dioxide prevents ultraviolet degradation, so even hot summer sun won't damage Board & Batten's beautiful surface.

StayRight™ vinyl stabilizers also help prevent heat degradation, both during manufacturing and after installation.

TrueShield™ impact modifiers give Board & Batten exceptional impact resistance, helping to prevent denting and dinging from routine around-the-house activities.

DesignersChoice™ pigment concentrates are used to produce uniform colors that go clear through siding panels. You'll never have to stain or paint again, because the color won't wash away.

Board & Batten. Technically, it's beautiful.



Classic architectural inspiration. Board & Batten.

Classically Styled to Complement your Architecture

Complement your architectural style . . . Gothic Revival, Victorian, Craftsman, Coastal or Classic Colonial.

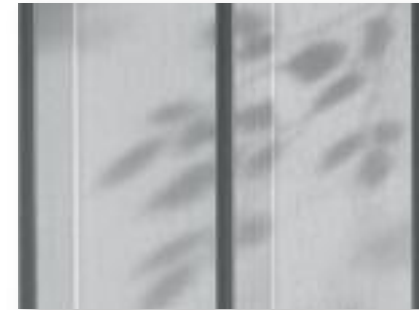
Classic details create exceptional beauty and appeal . . . whether a large home or small, new construction or vintage restoration. A focus on all exterior surfaces, or maybe just a way to accent special areas. Whatever your project and whatever its size, Alside Board & Batten Siding provides all the beautiful look-of-wood details you'll need to create a look of exceptional distinction.

Siding authentically proportioned.

Alside Board & Batten Siding reproduces the distinguishing details of classic board and batten siding installations. A stately 5 1/2" board face is accented by a delicate 1 1/2" batten that projects 1/2" above the board surface. The aesthetically pleasing proportions, combined with the emphatic bold shadow lines created by the battens, produce a look of refined elegance.

The natural look of wood.

Alside Board & Batten Siding looks like the real thing. Its natural grain texture captures the appearance – and even the feel – of the milled boards used in classic 19th century homes.



Everything but the smell of fresh paint.

To assure authenticity in every detail, Alside Board & Batten Siding is made with a smooth, low-gloss finish that looks as if it were applied with a painter's brush. And the best part is, that look will last forever.



Environmentally friendly.

The home that protects you can also help protect the environment. As a durable, eco-friendly product with a long service life, Alside vinyl siding reduces the depletion of wood and other natural resources used in home construction. And because it doesn't need to be painted, it helps prevent paint, stain and other maintenance-related products from harming the earth.

Multiply your exterior design choices.

Board and batten siding ranks as one of the most popular and versatile siding styles in architectural history. Following its early prominence in Gothic Revival architecture, it became popular among tradesmen building their own, more modest homes in a style they called Carpenter Gothic. After that, it was builders and homeowners who started using board and batten as an accent siding to call attention to a home's special features.

There's a lesson in that history:

It's easy and acceptable to use the bold look of board and batten anywhere and everywhere you want to create interest.

Alside Board & Batten Premium Vertical Siding. Borrowing from history to create a beautiful future.

USGBC and related logo is a trademark owned by the U.S. Green Building Council and is used by permission.





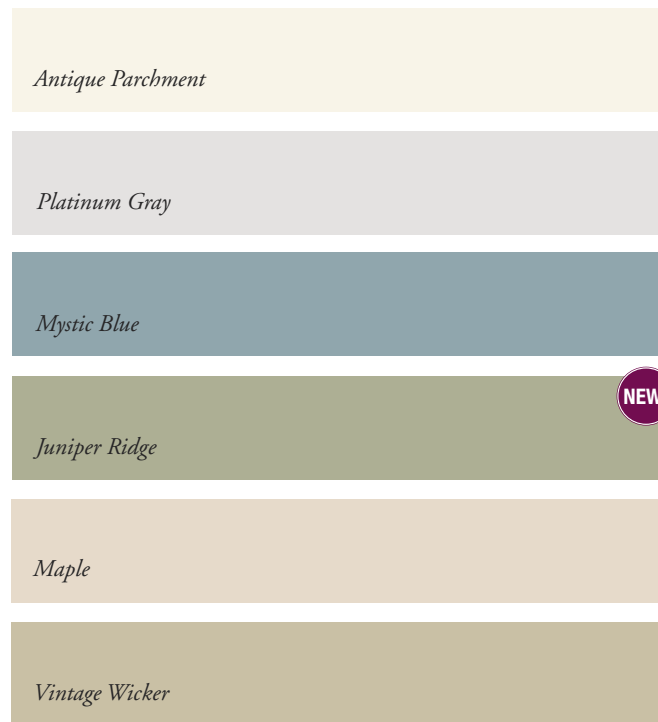
We've made it easy to choose the right color.

Look at your home, look at its surroundings. Then look at the Alside Board & Batten color palette. With 13 contemporary colors to choose from, you'll quickly find one that gives your home the special emphasis you want to create. All provide a low-gloss, easy-care finish. And all are color-coordinated with Alside's full range of trim and accessory products.

Use decorative options to give your home "one-of-a-kind" appeal.

When homeowners choose a siding, they often overlook the special areas around doors and windows, at corners and gable ends, or up along an eave line. But those areas can give a home distinction, that special something extra that makes passersby stop and take a second look. If you want that kind of distinction for your home, consider the range of exterior design options Alside offers to enhance the beauty of your home.

Rich palette of exterior design options:



Note: Colors are as accurate as printing techniques allow. Make final color selections using actual vinyl samples.

ChromaTrue® Chroma True helps make Board & Batten better with ASA weatherable polymers which provide superior fade resistance and better performance on darker colors.



Horizontal band board provides a strong horizontal accent.



Alside Premium Scallops – Victorian inspired half-round shingles.



Greenbriar® Vintage Beaded soffit and Trimworks® soffit crown molding.



Trimworks® 3 1/2" window trim.



Trimworks® 5" window trim.



Charter Oak® invisibly-vented soffit.



Alside Premium Shakes – the classic look of deep-grained cedar shakes.



Trimworks® custom crown molding used with wood window trim.



Trimworks® three-piece beaded corner post.

Board & Batten Premium Vertical Vinyl Siding



An architectural classic that's easy to care for.

It's easy to see why Alside Board & Batten Premium Vinyl Siding is an outstanding choice for any home exterior project:

- Exceptional beauty captured by a classic siding profile.
- Extra-thick panel construction, with the rigidity to keep wall surfaces even and course lines straight.
- A wide selection of contemporary colors.
- Easily combined with a wide choice of decorative trim options.
- Trouble-free rinse-and-clean maintenance that saves time and money.

Here's another reason, and it's just as important: It's made by Alside, a recognized industry leader in product innovation and manufacturing excellence. That means performance you can trust and quality you can count on – not only when the siding is installed, but for as long as you own your home.

Board & Batten Premium Vertical Vinyl Siding. Exceptional beauty you'll enjoy forever.

Warranty information.

Board & Batten Premium Vertical Vinyl Siding and Alside accessories are backed by lifetime limited warranties. Copies of the warranties* are available by writing to:



Alside Warranty Services
PO Box 2010
Akron, Ohio
44309

**See printed warranty for complete details.*



Pertains to Board & Batten Vertical Siding

Consult the VSI website at www.vinylsiding.org for a current list of certified products and colors.



Alside PO Box 2010 Akron, Ohio 44309
1-800-922-6009 www.alside.com

